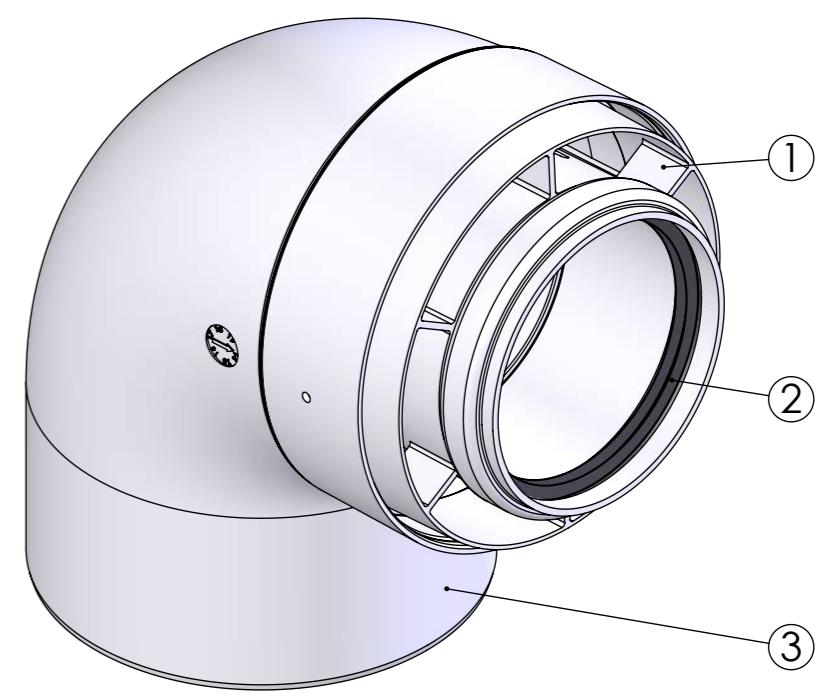
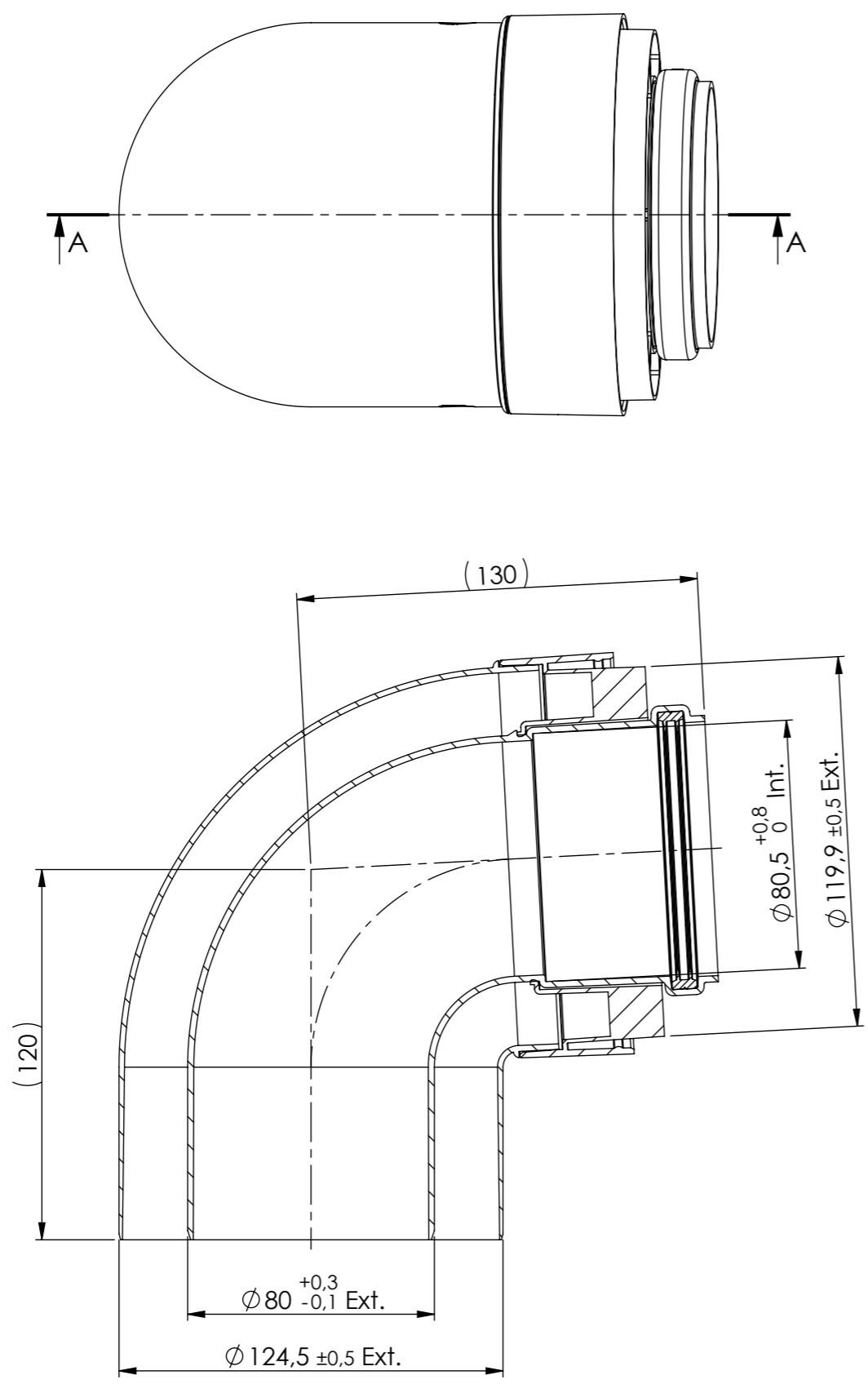


This drawing is property of Cox Geelen and may not be copied in whole or in part without the prior written consent of the owner


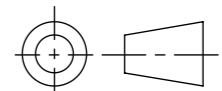


| Pos. | QTY. | Description                             | Material     | Drawing | Part nr   |
|------|------|---|--------------|---------|-----------|
| 3    | 1    | Bend $\varnothing 125$ 87° coupling     | EN-AC-46000  | A0194   | 891703    |
| 2    | 1    | Flue bend $\varnothing 80$ 87° Standard | CoxPP - EPDM | L0667   | BLAHAK600 |
| 1    | 1    | Coupling unit $\varnothing 80$ -125     | PC/ABS       | A3985   | -         |

Scale: 1:2    Unit of measure: mm    Material: CoxPP - AI    Comments: Thickness of coating: average  $\geq 70\mu\text{m}$

Title: **Bend  $\varnothing 80$ -125 87° ConneXt**

CAD Model: Bend 80-125 87deg PP-AI coupling  
Configuration: Standard

|  |  |  |                                 |
|--|--|--|---------------------------------|
|  <b>Cox Geelen</b><br>www.coxgeelen.com | Tolerances:<br>$\varnothing = \pm 0,5$<br>$L = \pm 3$<br>$\angle = \pm 3^\circ$        | Projection:<br> | Dwg. no. : <b>B002 P00</b>   A3 |
|  | Revisions: 00 Production drawing 13020 18-04-2016 R. Houwen C. Vaessen Created Checked |  |                                 |