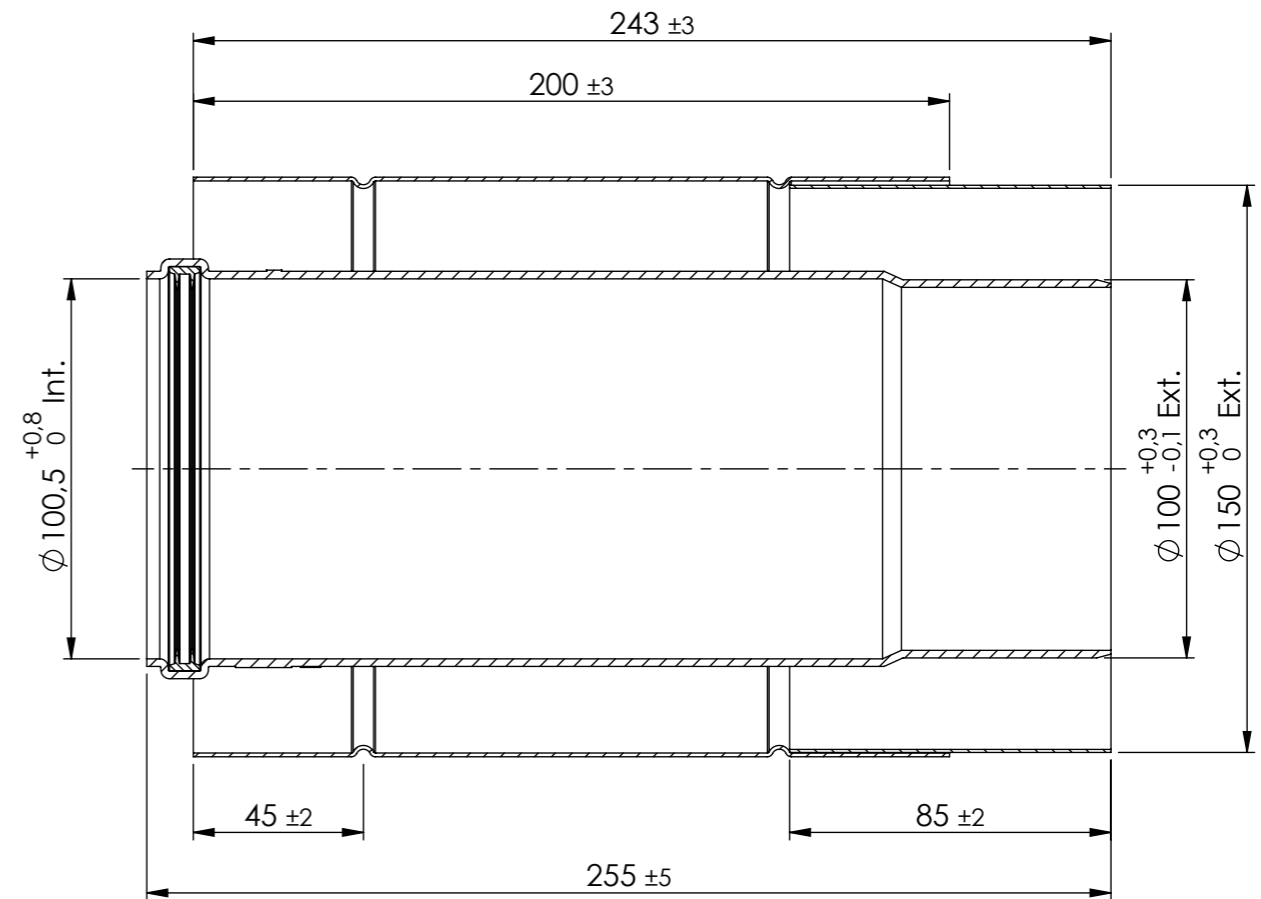
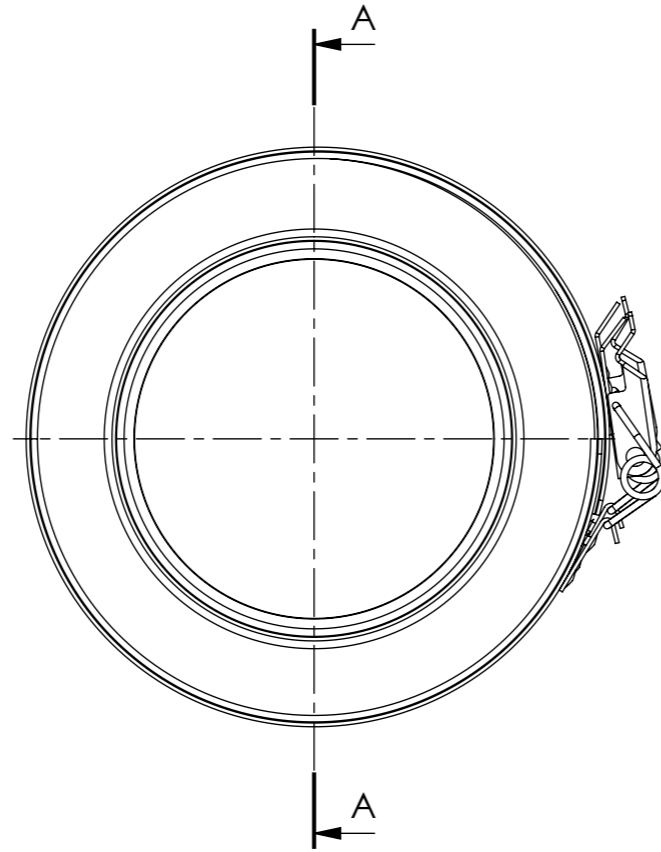
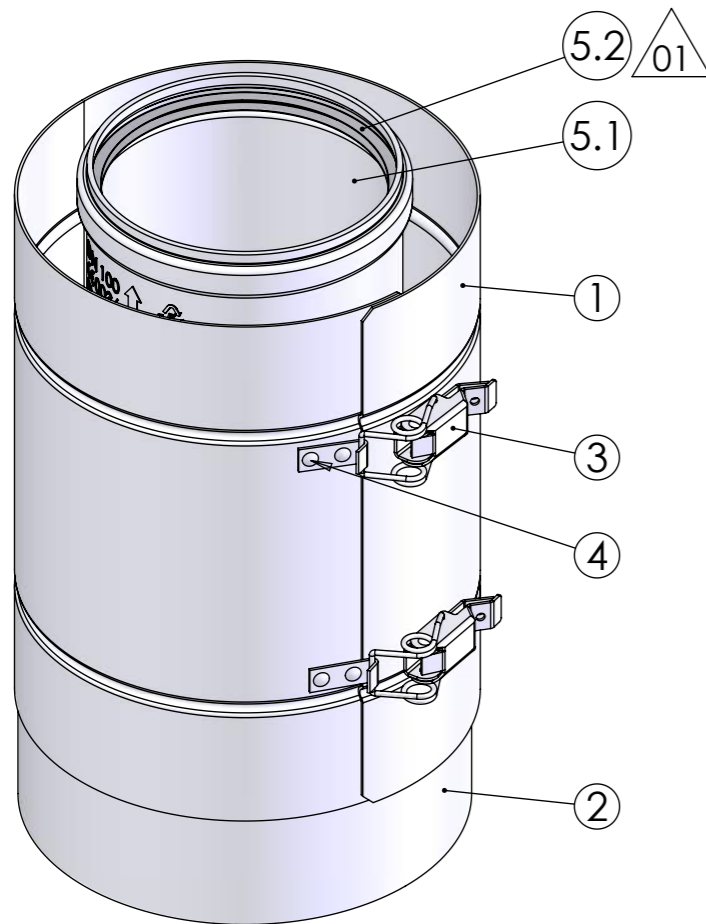


This drawing is property of Cox Geelen and may not be copied in whole or in part without the prior written consent of the owner



SECTION A-A



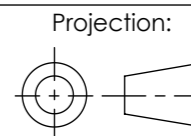
| Pos. | QTY. | Description | Material | Drawing | Part nr |
|------|------|------------------------------|---------------|---------|---------|
| 5.2 | 1 | Seal EPDM Flue gas ø100 S | EPDM Flue gas | A1960 | 891311 |
| 5.1 | 1 | Adjustable pipe ø100 | CoxPP | - | - |
| 5 | 1 | Adjustable pipe ø100 | - | A2429 | CLAK |
| 4 | 8 | Solid rivet n°12 1/8" #21504 | Galvanized | - | 860016 |
| 3 | 2 | Toggle latches and strike | - | - | 890276 |
| 2 | 1 | Pipe ø150 | EN-AW-1050A | - | - |
| 1 | 1 | Clamping strip | EN-AW-1050A | - | - |

Scale: 1:2 Unit of measure: mm Material: - Comments: Thickness of coating: average ≥70µm

Title: Adjustable pipe with clamp ø100-150 PP-Al

CAD Model: Schuifstuk met klemband PPs-Alu
Configuration: 100-150

Tolerances:
 $\varnothing = \pm 0,5$
 $L = \pm 3$
 $\angle = \pm 3^\circ$



| Revisions | Created | Checked |
|---|---------|---------|
| 01 Seal color changed 17006 24-10-2017 M. Ubags E. Franssen | | |
| 00 Production drawing 11080 13-12-2013 M. Ubags C. Vaessen | | |

Dwg. no. : **A2403 P01** | A3