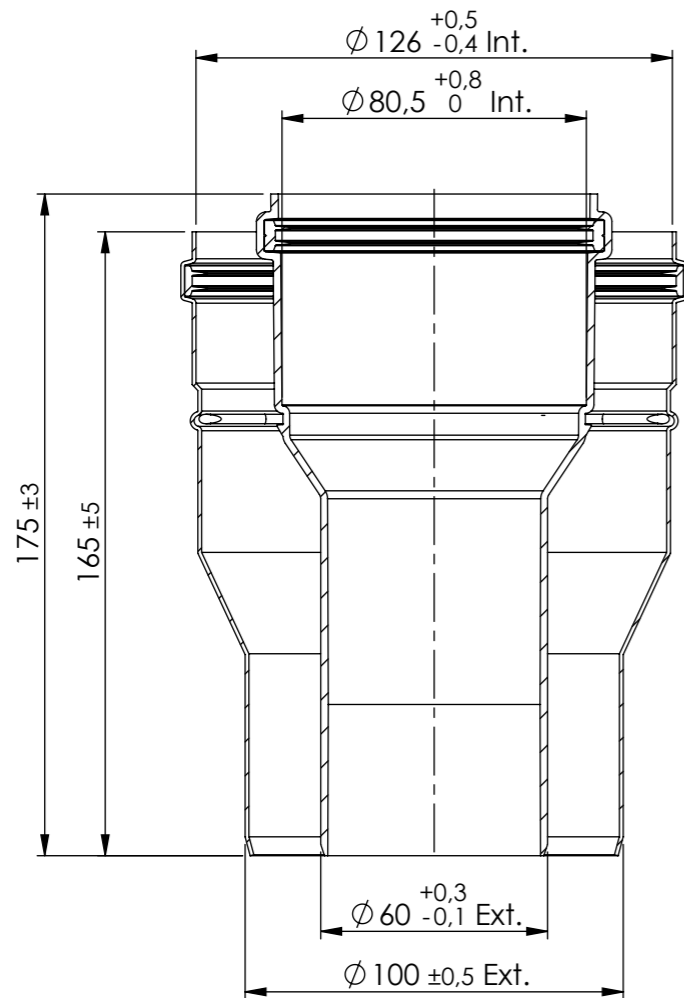
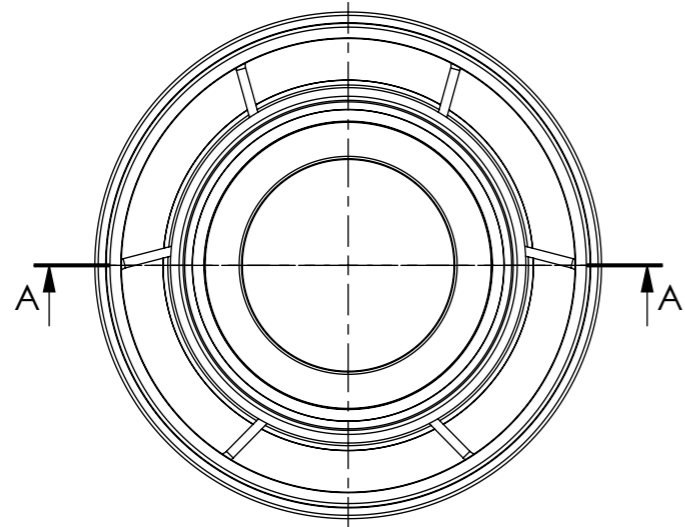
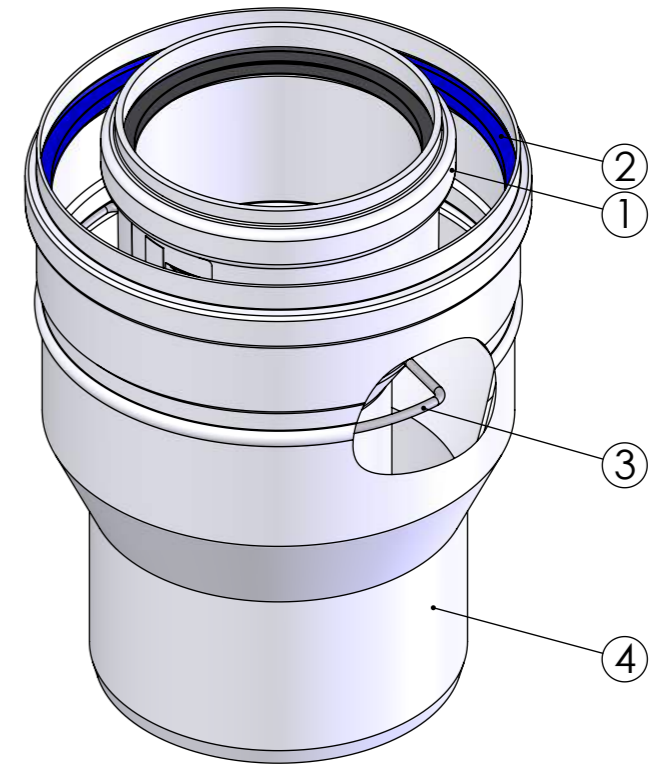


This drawing is property of Cox Geelen and may not be copied in whole or in part without the prior written consent of the owner



SECTION A-A



Pos.	QTY.	Description	Material	Drawing	Part nr
4	1	Expansion $\varnothing 100-125$ L165	EN-AW-6060	-	-
3	1	Spring $\varnothing 80-125$	AISI 301	A2263	891088
2	1	Seal VMQ Air $\varnothing 125$	VMQ Air	A2641	700249
1	1	Expansion $\varnothing 60-80$	-	L0683	891161

Scale: 1:2 Unit of measure: mm Material: Comments: Thickness of coating: average $\geq 70\mu\text{m}$

Title: Adapter $\varnothing 60-100 / \varnothing 80-125$ L175 PP-Al seal

CAD Model: Expansion 60-100 80-125 PP-Al seal
Configuration: L175

<p>Cox Geelen www.coxgeelen.com</p>	<p>Tolerances:</p> $\varnothing = \pm 0,5$ $L = \pm 3$ $< = \pm 3^\circ$	<p>Projection:</p>	<p>Dwg. no. : B0071 P00 A3</p>
	<p>00 Production drawing 13020 27-05-2016 F. Knoops C. Vaessen Revisions Created Checked</p>		