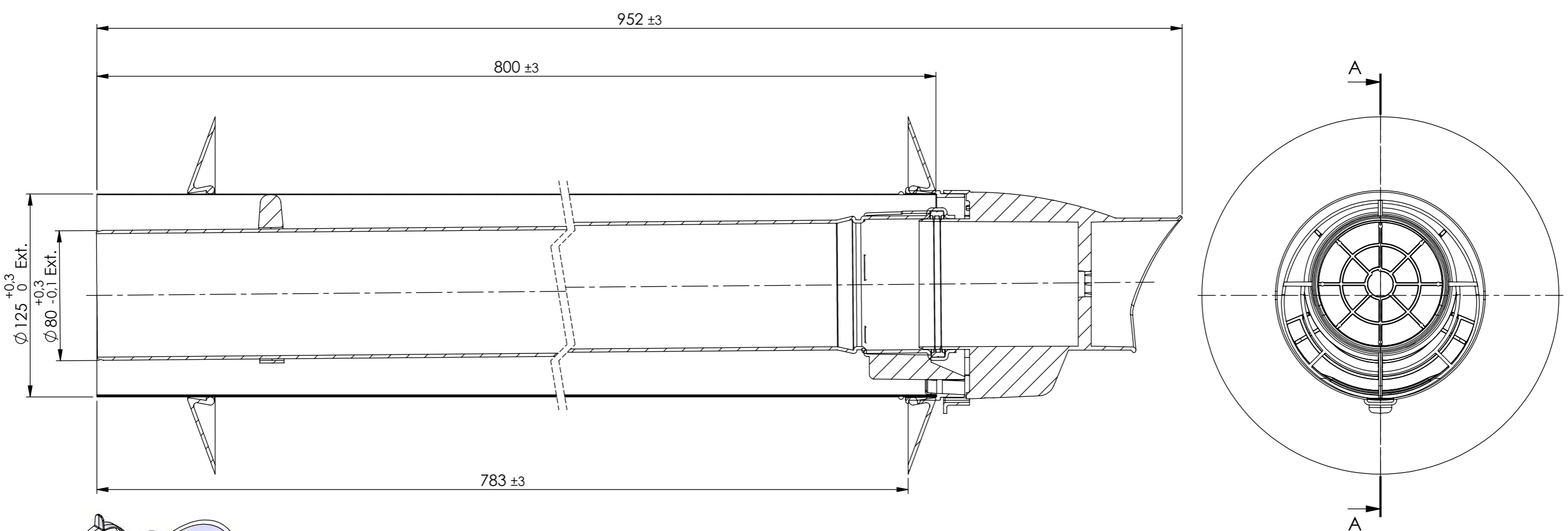
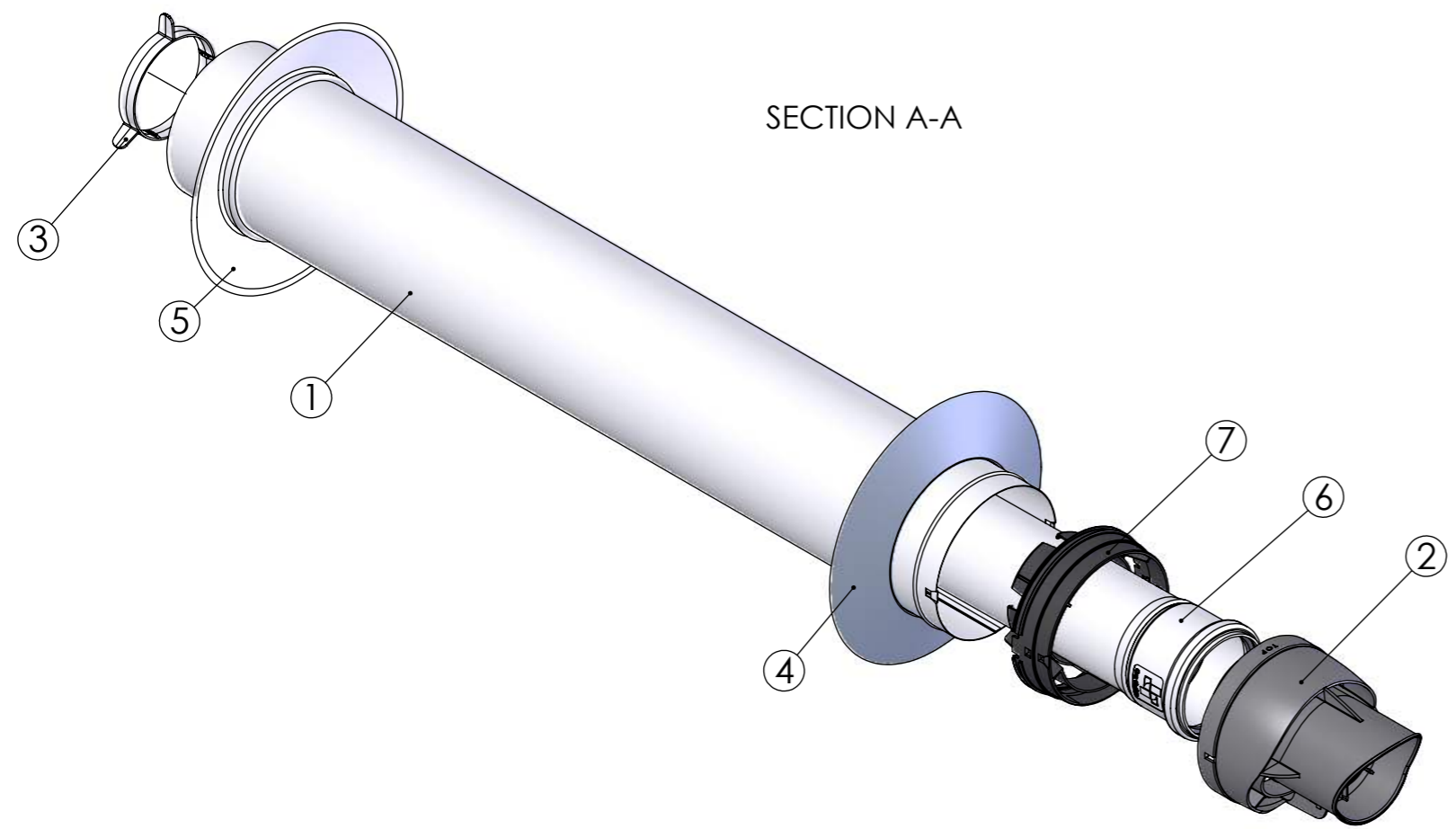


This drawing is property of Cox Geelen and may not be copied in whole or in part without the prior written consent of the owner



SECTION A-A


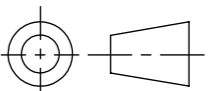


Pos.	QTY.	Description	Material	Drawing	Part nr
7	1	Coupling ø80-125 PMK	CoxPP	A0743	890645
6	1	Flue Pipe ø80 Extrusion	-	L0697	892206
5	1	Wall Seal	TPE	A0983	890703
4	1	Wall Seal	TPE	A0983	890704
3	1	Distance ring ø80-125	PP	A0013	891598
2	1	Terminal end	PP MJK2/EP548R	A0307	890241
1	1	Air pipe	DX52D	-	-

Scale: 1:2.5    Unit of measure: mm    Material: -    Comments: Thickness of coating: average ≥70µm

Title: Econext wall terminal ø80-125 PP-Galv.

CAD Model: Econext Wall 80-125 PP-Galv  
 Configuration: Econext Wall 80-125 PPs-Galv. L800 EPDM - zonder smeermiddel

 <b>Cox Geelen</b> www.coxgeelen.com	Tolerances: $\varnothing = \pm 0,5$ $L = \pm 3$ $< = \pm 3^\circ$	Projection: 
	Dwg. no. : <b>B0142 P00</b> A3	

Revisions	Created	Checked
00 Production drawing	13020 05-08-2016 F. Knoops	C. Vaessen