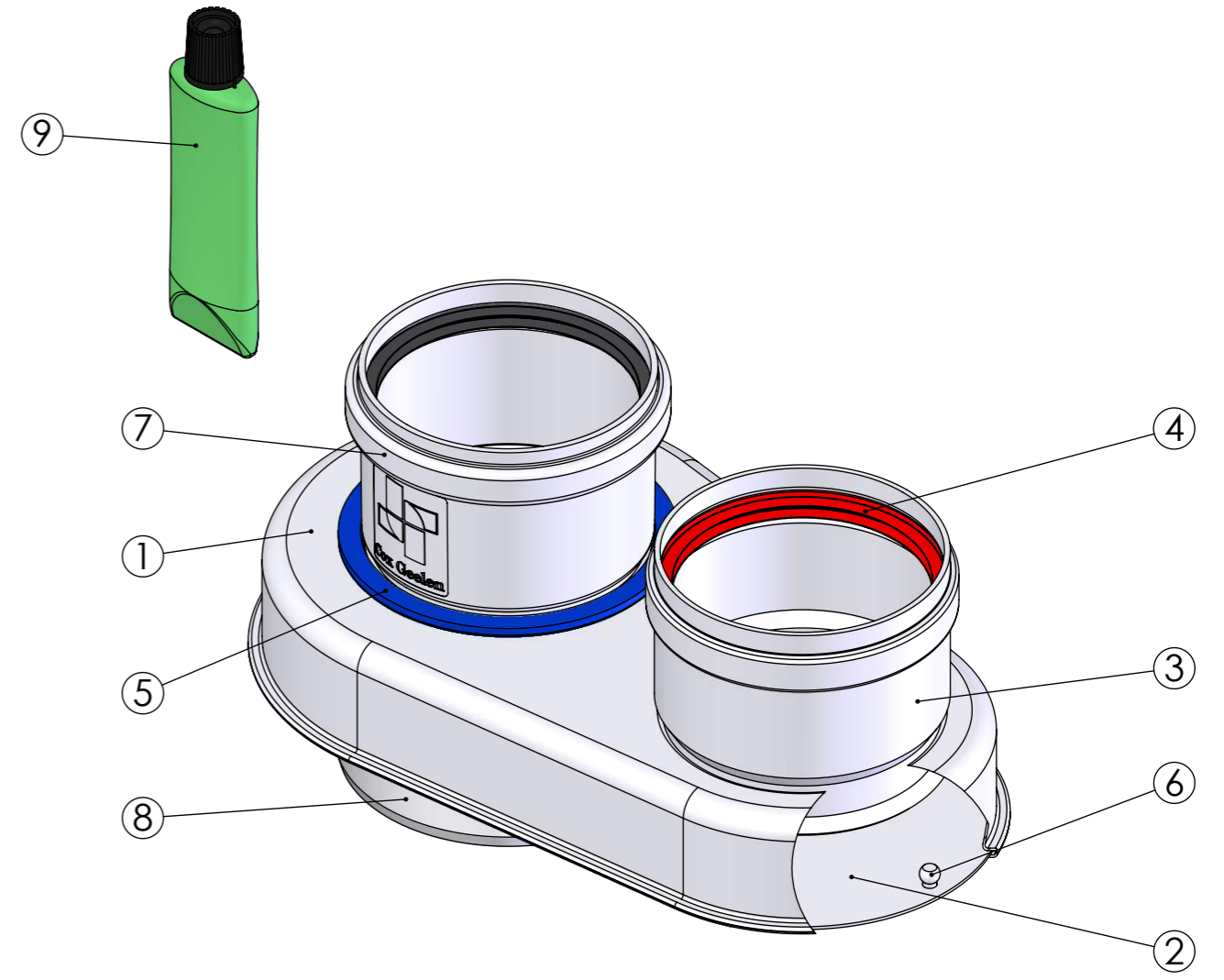
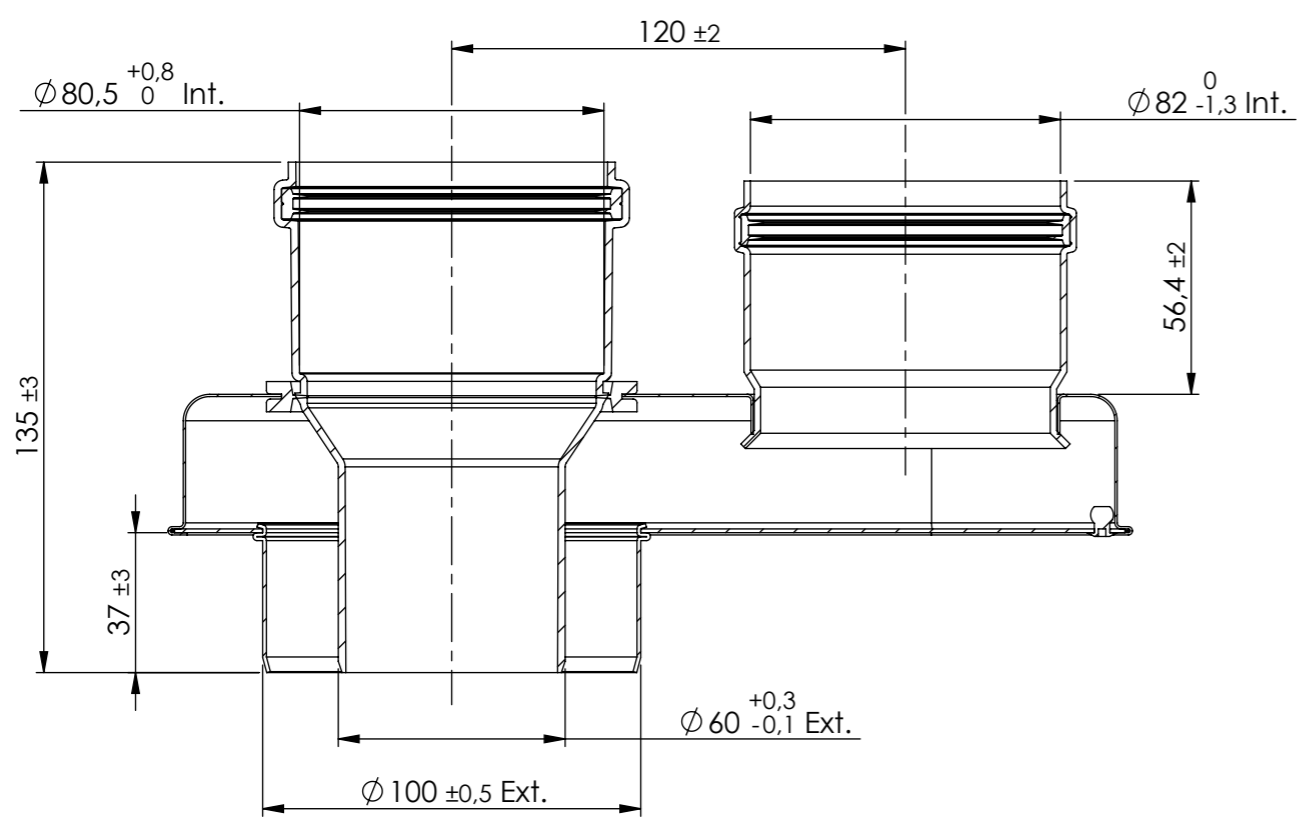
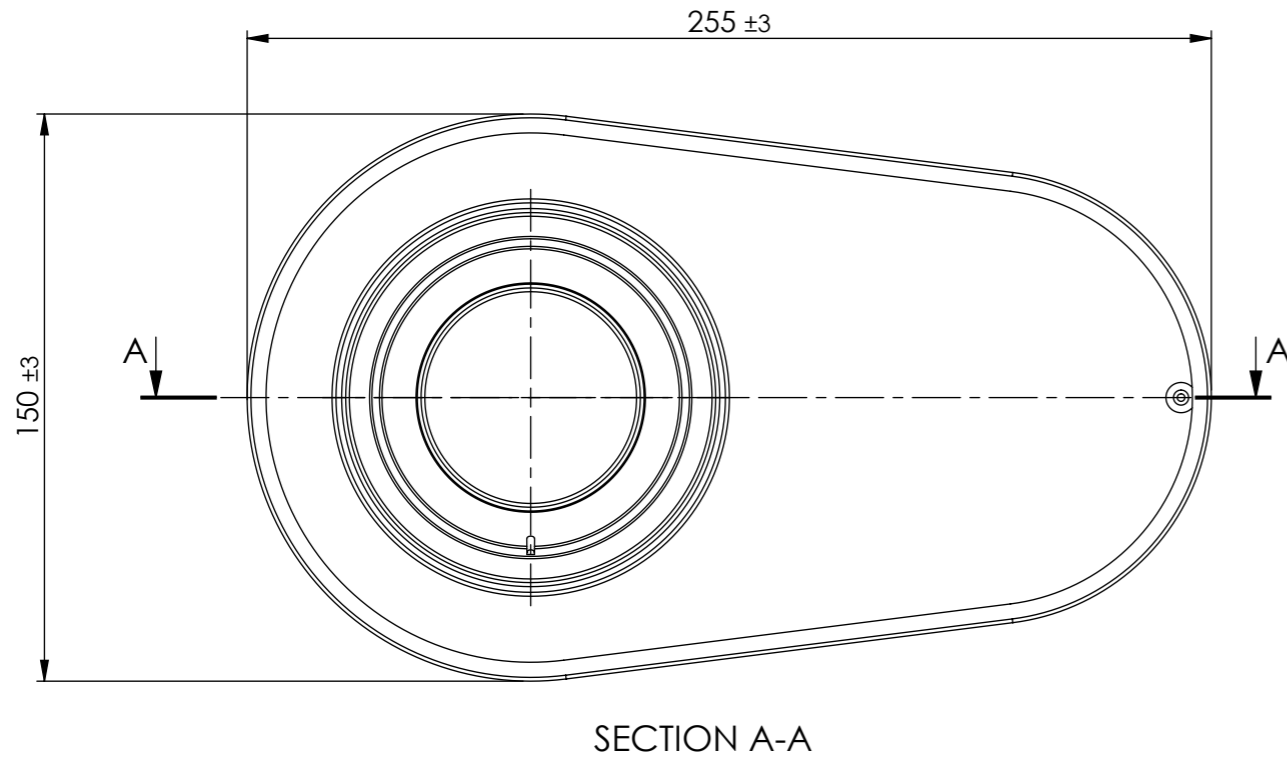


This drawing is property of Cox Geelen and may not be copied in whole or in part without the prior written consent of the owner



| Pos. | QTY. | Description | Material | Drawing | Part nr |
|------|------|------------------------------|-------------------|---------|---------|
| 9 | 1 | Lubricant 30gr. | Lubricant | A3082 | 890290 |
| 8 | 1 | Air pipe | EN-AW-1050A | - | - |
| 7 | 1 | Expansion ø60-80 PP | - | B0013 | - |
| 6 | 1 | Rivet | EN-AW-1050A | - | 860003 |
| 5 | 1 | Recess seal VMQ flue gas ø80 | VMQ Flue gas blue | A1774 | 890423 |
| 4 | 1 | Seal VMQ Flue gas ø80 | VMQ Flue gas | A2265 | 700241 |
| 3 | 1 | Air-inlet pipe | EN-AW-6060 | - | - |
| 2 | 1 | Plate | DX52D | A0451 | - |
| 1 | 1 | Parallel adapter | DX52D | - | - |

Scale: 1:2 Unit of measure: mm Material: - Comments: Thickness of coating: average ≥70µm

Title: Adapter ø60-100/ø80-80 PP-Galv

CAD Model: Adapter 60-100 80-80 PP
Configuration: Algemeen klantr.

| | | | |
|--|---|--------------------|--------------------------------------|
| <p>Cox Geelen www.coxgeelen.com</p> | <p>Tolerances:</p> <p>ø = ±0,5 L = ±3 < = ±3°</p> | <p>Projection:</p> | <p>Dwg. no. : B0214P00 A3</p> |
| | <p>00 Production drawing 13020 24-08-2016 V. Esquivel C. Vaessen</p> <p>Revisions Created Checked</p> | | |